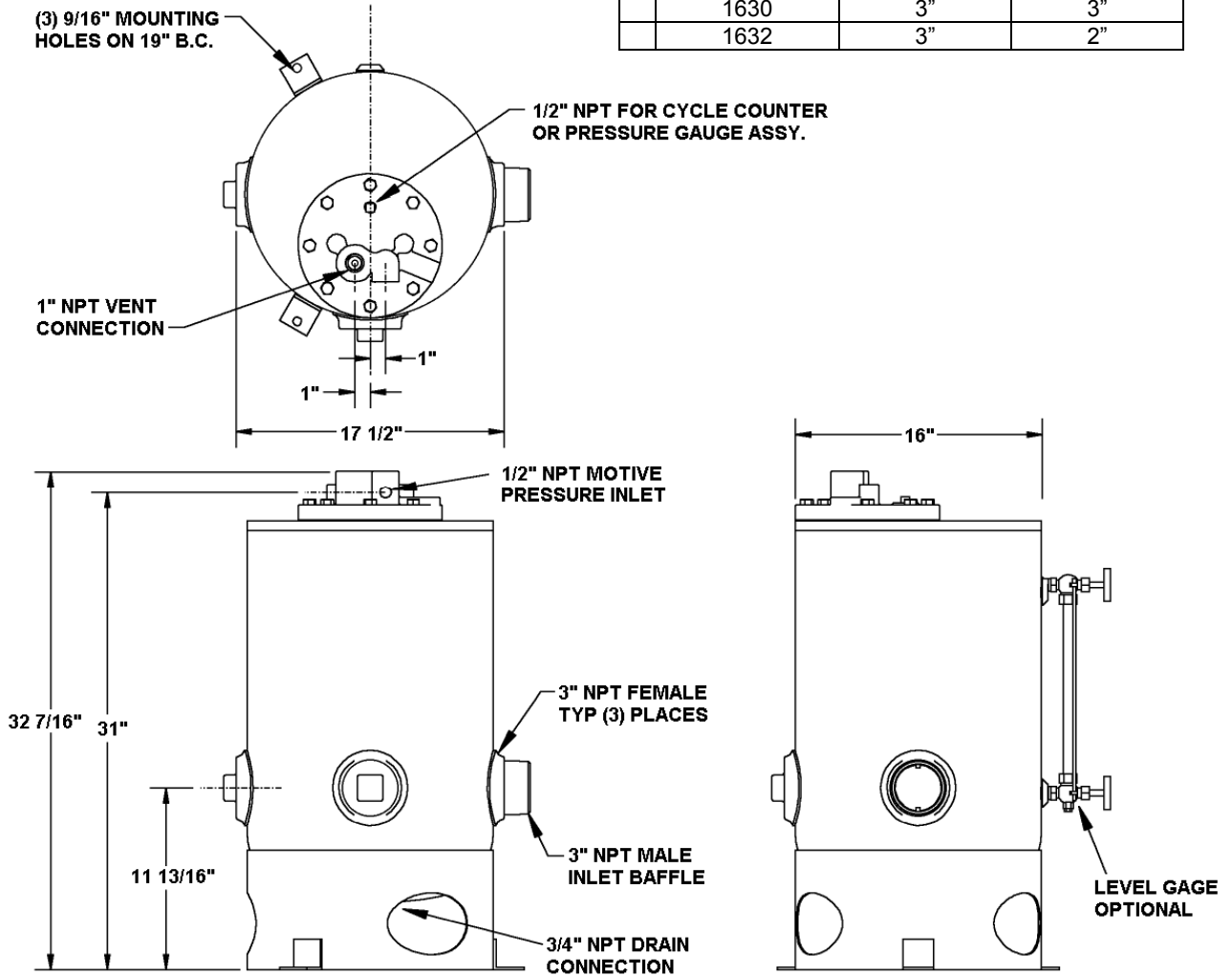


# LIQUI-MOVER® CONDENSATE HANDLING SYSTEM SUBMITTAL

<b>PROJECT OR CUSTOMER:</b>	<b>REPRESENTATIVE:</b>	
	<b>ENGINEER:</b>	
	<b>CONTRACTOR:</b>	
<b>REFERENCE:</b>	<b>ORDER NO:</b>	<b>DATE:</b>
	<b>APPROVED BY:</b>	<b>DATE:</b>
	<b>SUBMITTED BY:</b>	<b>DATE:</b>

**MODEL: LMV-16XX-LOOO-FSA**  
 (XX) Designates Check Valve Size – See Chart B

Chart B		
LMV-16XX	Inlet Check Size	Outlet Check Size
1610	1"	1"
1615	1-1/2"	1-1/2"
1620	2"	2"
1630	3"	3"
1632	3"	2"



Note: Dimensions listed are for reference only. Firm dimensions are available on request.

Kadant Johnson  
 805 Wood Street, Three Rivers, MI 49093 USA  
 269-278-1715 fax: 269-279-5980  
 www.liquimover.com



## LIQUI-MOVER® CONDENSATE HANDLING SYSTEM SUBMITTAL

---

Material Specifications	
Part Description	Material
Pumping Tank	ASME Code Stamped 150 PSIG Shell & Bottom Head – Carbon Steel SA-414 G Flat Head Top – Carbon Steel SA-516-70
Float Mechanism	Mounting Flange – Cast Iron SA-278 Support Frame - Ductile Iron SA-395 w/ Nitride Surface Float, Valves, Springs and Linkage – Stainless Steel
Check Valves	As Specified
Gauge Glass	Bronze Valves with Redline Glass and Brass Guard Rods

### UNIT SPECIFICATIONS:

### ADDITIONAL NOTES/COMMENTS:

Motive steam pressure reducing valve should be used on motive supply to regulate pressure to 20 psig above backpressure and allow for adjustment at start-up.