

SIGHT FLOW INDICATORS

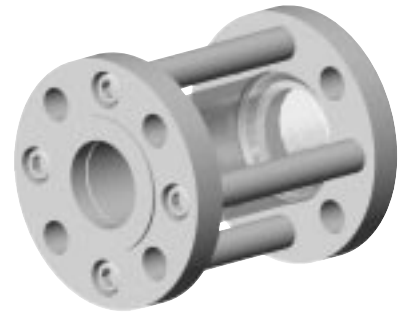
Johnson Sight Flow Indicators are engineered to provide visual observation of liquid and gas flows. These pipeline indicators are available with ductile iron or bronze bodies. All glass windows are made of Pyrex® or equal. Indicators can be furnished with special transparent-type Mica liners to protect glass against erosion and corrosion. Sight Flow Indicators are available in sizes from 3/8" to 4" with threaded and flanged options.

HIGH FLOW CAPACITY

Straight-through internal passage offers little resistance to flow. The flow area of all units is equal to the area of pipe of the same nominal size.

HIGH VISIBILITY

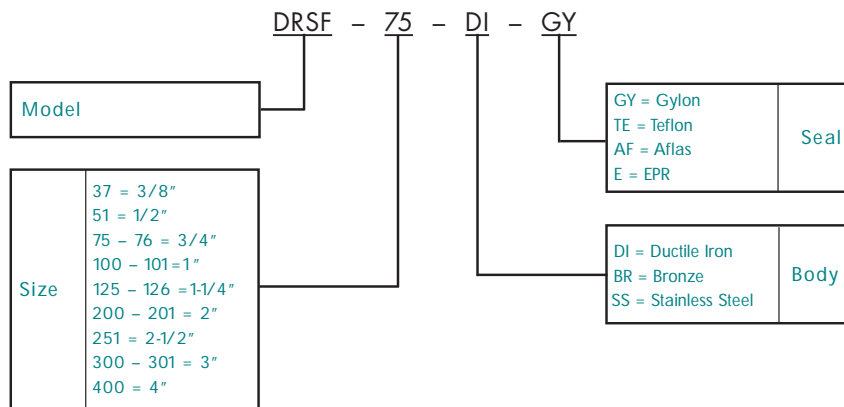
Extra large round glass windows provide exceptionally good visibility of flow. The entire internal passage is open for observation. Generally, the diameter of the viewing ports exceeds the nominal pipe size. Optional rotor or ball available in most models.

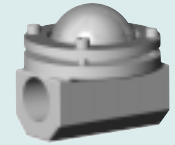


EASY TO INSTALL

Sight flows can be built into process piping systems as easily as a simple valve or common pipe fitting. Units can be installed in vertical, horizontal or angular piping with flow in either direction.

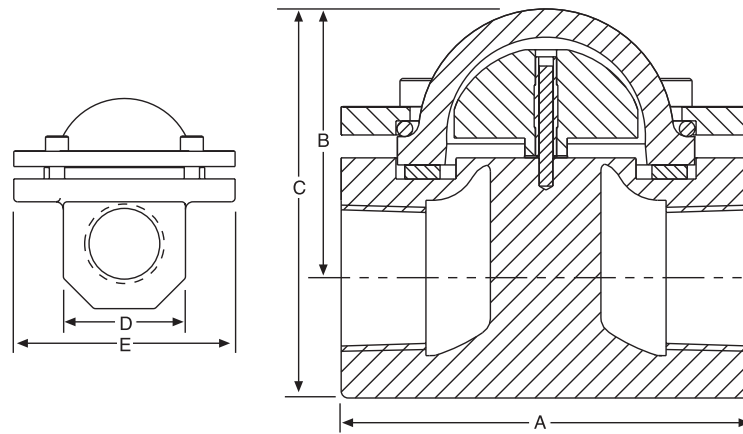
EXPLANATION OF CATALOG NUMBERS





TYPE DRSF SIGHT FLOW INDICATORS

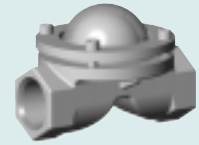
dome rotor series with screwed connections



DRSF IS RATED UP TO 150 PSIG *

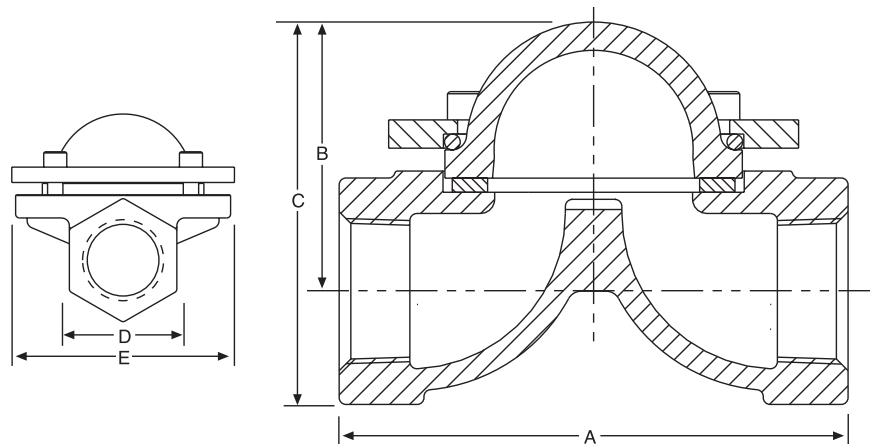
Model	Size	A	B	C	D	E
DRSF-75-BR-GY	3/4	3.62	2.38	3.38	2.0	3.62
DRSF-100-DI-GY	1	3.62	2.38	3.38	2.0	3.62

*When used with bi-phase flow of steam and condensate, maximum pressure is 75 psig.



TYPE DSF SIGHT FLOW INDICATORS

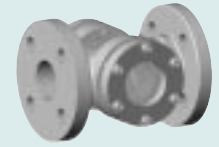
dome series with screwed connections



DSF IS RATED UP TO 150 PSIG *

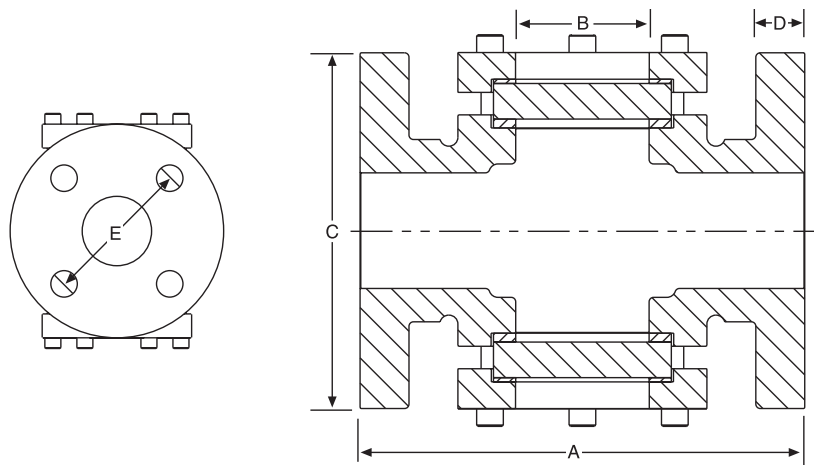
Model	Size	A	B	C	D	E
DSF-37-DI-GY	3/8	3.5	2.12	2.88	1.25	3.5
DSF-50-DI-GY	1/2	3.5	2.12	2.88	1.25	3.5
DSF-75-DI-GY	3/4	4.5	2.38	3.38	1.75	3.5
DSF-100-DI-GY	1	4.5	2.38	3.38	1.75	3.63
DSF-125-DI-GY	1-1/4	4.5	2.62	3.38	2.12	3.5

*When used with bi-phase flow of steam and condensate, maximum pressure is 75 psig.



TYPE PSFF SIGHT FLOW INDICATORS

porthole series with flanged connections



PSFF IS RATED UP TO 150 PSIG*

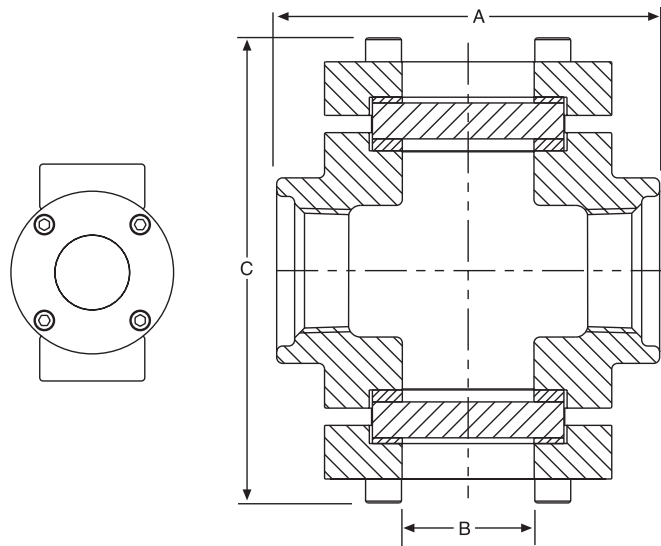
Model	Size	A	B	C	D	E
PSFF-101-DI-GY	1	5.0	1.38	4.25	0.56	3.12
PSFF-126-DI-GY	1-1/4	6.25	1.88	5.0	0.69	3.5
PSFF-151-DI-GY	1-1/2	6.25	1.88	5.0	0.69	3.88
PSFF-201-DI-GY	2	5.5	1.88	6.5	0.63	4.75
PSFF-301-DI-GY	3	8.0	3.25	7.5	0.94	6.0
PSFF-400-DI-GY	4	8.0	3.25	9.0	0.94	7.5

*When used with bi-phase flow of steam and condensate, maximum pressure is 75 psig.



TYPE PSFS SIGHT FLOW INDICATORS

porthole series with screwed connections



PSFS IS RATED UP TO 150 PSIG *

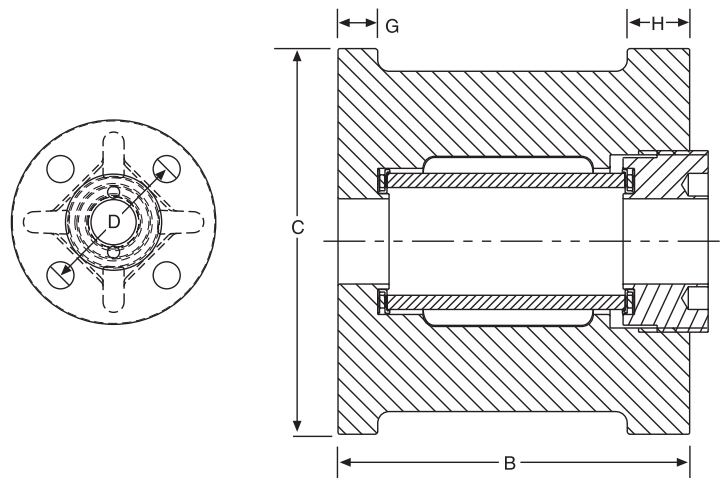
Model	Size	A	B	C
PSFS-38-DI-GY	3/8	3.12	0.94	3.75
PSFS-51-DI-GY	1/2	3.12	0.94	3.75
PSFS-76-DI-GY	3/4	3.62	1.38	5.0
PSFS-101-DI-GY	1	3.62	1.38	5.0
PSFS-126-DI-GY	1-1/4	4.25	1.88	5.44
PSFS-151-DI-GY	1-1/2	4.25	1.88	5.44
PSFS-201-DI-GY	2	4.5	1.88	5.75
PSFS-251-DI-GY	2-1/2	5.0	1.88	6.38

*When used with bi-phase flow of steam and condensate, maximum pressure is 75 psig.



TYPE TSF SIGHT FLOW INDICATORS

through-flow series with flanged connections



TSF IS RATED UP TO 150 PSIG*

Model	Size	B	C	D	G	H
TSF-100-DI-TE	1	3.88	4.25	3.12	0.44	0.69
TSF-125-DI-TE	1-1/4	3.88	4.62	3.5	0.5	0.69
TSF-150-DI-TE	1-1/2	4.88	5.0	3.88	0.56	0.69
TSF-200-DI-TE	2	4.88	6.0	4.75	0.62	0.69
TSF-300-DI-TE	3	5.88	7.5	6.0	0.75	0.75

*When used with bi-phase flow of steam and condensate, maximum pressure is 75 psig.